



Specification Sheet

4-Power[®] G

Gasoline Fuel System Cleaner



Saves Money



Extends Life



Temperature Performance



Less Maintenance



Saves Time



Heavy Duty



Benefits

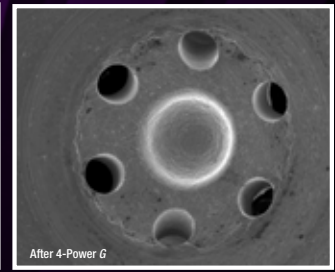
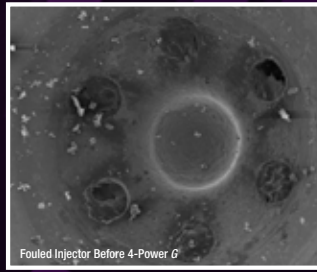
- Aggressively cleans fuel system
- Cleans dirty injectors
- Dissolves varnish, gum, and deposits
- Protects against corrosion
- Disperses moisture
- Eases cold weather starts
- Intended for use in fuel systems where gasoline and ethanol containing gasolines are in use

Description

Conklin 4-Power G is a powerful cleaner designed specifically for gasoline fuel systems to maximize engine efficiency and performance. Clean fuel systems components will allow for more efficient fuel dispersion and complete combustion, improving driver satisfaction and reducing engine problems. 4-Power G offers exceptional control and clean-up of fuel injectors and intake deposits while also controlling combustion chamber deposits where gasoline and ethanol containing gasolines are in use.

- Fuel injector, fuel line, and carburetor clean-up
- Combustion chamber, valve, and port deposit clean-up
- Clean-up of combustion chamber deposits, reducing knocking and pinging
- Excellent clean-up of injectors in direct injection gasoline engines, where injector plugging is more of a concern
- Intended for use in all gasolines including ethanol gas (E10, E15, and E85) and gasoline fuel systems where ethanol fuels have been used.

Performance. Value. Longevity.



Application & Treatment

Gasoline Engines (G):

- Add 16 oz. per 16 gallons of fuel

Two-Cycle Engines (TC):

- Add 4 oz. per 2.5 gallons of fuel

Directions

In either of the above treatment rates and regardless of the age of the vehicle, 4-Power G should be used through two consecutive tanks. After the second use, if the vehicle is equipped with a serviceable fuel filter it should be changed. 4-Power G should then be used every 4000 miles or 4 months while Conklin's Fuel Mate Plus® should be used in every tank. Not for use in Diesel Fuel Systems. Conklin is not liable for issues when products are used in a method other than directed above.

Part Numbers

- | | |
|---------|------------------------|
| #057621 | Single bottle (16 oz.) |
| #057625 | 12 bottle/cs. (16 oz.) |